

SCIS Pupil Numbers 2009/10

As at September 2009, pupil numbers in SCIS schools had fallen fractionally by 0.4%, or 127 pupils – a smaller fall than the previous year. There was an increase in the number of nursery pupils and secondary pupils, and there has been no change in the number of boarding pupils since September 2008. A significant proportion of the change was accounted for by a fall in the number of primary school pupils.

Table 1 –All schools

	All pupils including nursery	Total excluding nursery	Nursery pupils	Primary pupils	Secondary pupils	Day pupils excluding nursery	Boarding pupils
2009/10	31,713	29,842	1,871	11,306	18,536	26,318	3,524
% change	-0.4	-0.7	+5.2	-2.5	+0.4	-0.8	0.0
2008/09	31,840	30,061	1,779	11,601	18,460	26,538	3,523
% change	-0.7	-0.8	+1.4	-0.8	-0.8	-0.7	-2.0
2007/08	32,065	30,310	1,755	11,695	18,615	26,714	3,596

Table 2 –Mainstream Schools only

	All pupils including nursery	Total excluding nursery	Nursery pupils	Primary pupils	Secondary pupils	Day pupils excluding nursery	Boarding pupils
2009/10	31,130	29,275	1,855	11,207	18,068	26,076	3,199
% change	-0.4	-0.7	+5.3	-2.3	+0.3	-0.8	+0.3
2008/09	31,251	29,489	1,762	11,468	18,021	26,298	3,191
% change	-0.3	-0.4	+1.9	-0.5	-0.4	-0.6	+0.9
2007/08	31,351	29,621	1,730	11,528	18,093	26,457	3,164

Table 3 - Special Schools only

	All pupils including nursery	Total excluding nursery	Nursery pupils	Primary pupils	Secondary pupils	Day pupils excluding nursery	Residential pupils
2009/10	583	567	16	99	468	242	325
% change	-1.0%	-0.9%	-5.9%	-25.6%	+6.6%	+0.8%	-2.1%
2008/09	589	572	17	133	439	240	332
% change	-17.5	-17.0	-32.0	-20.4	-15.9	-6.6	-23.1
2007/08	714	689	25	167	522	257	432

Chart showing primary¹ and secondary pupil numbers in SCIS schools 1999-2009

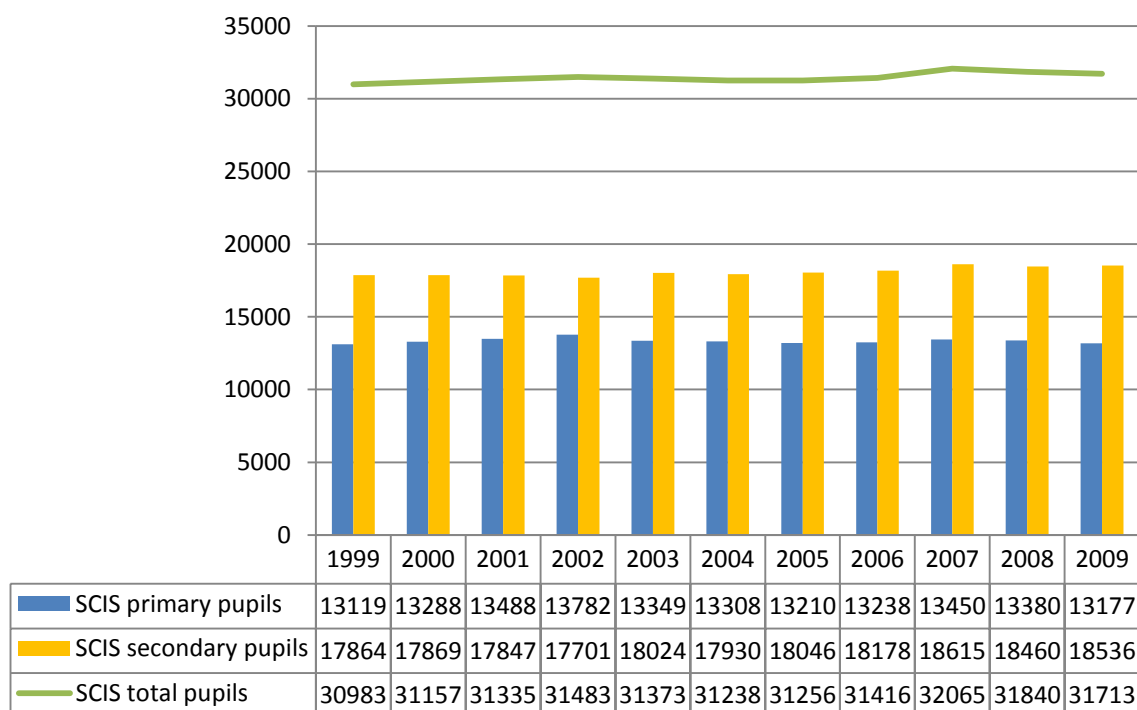
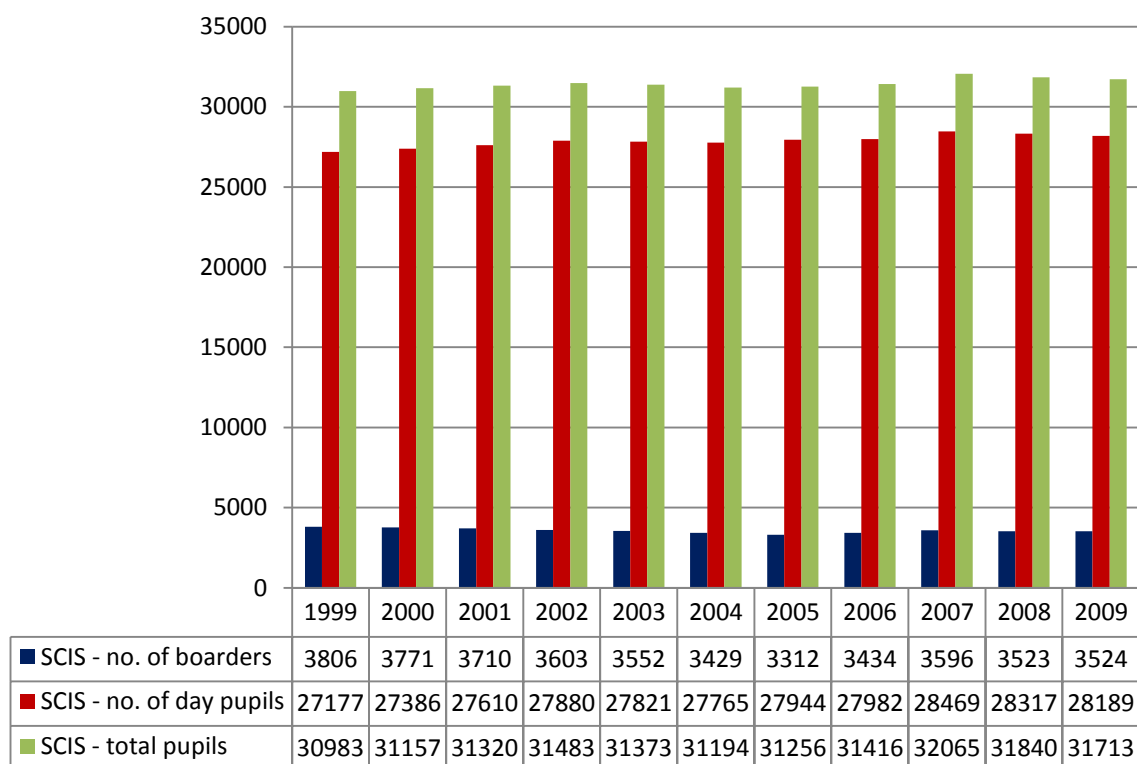


Chart showing day² and boarding pupil numbers in SCIS schools 1999-2009



¹ In this chart, primary pupil numbers include nursery pupils.

² In this chart, day pupil numbers include nursery pupils.