

Stability despite tough economic conditions

Parents' commitment to an independent education

Stability, good value and positive outlook are the key messages of the 2010-2011 census of Scotland's independent schools, produced by the Scottish Council of Independent Schools (SCIS). Pupil numbers have remained stable overall, with a fractional fall of 0.5% on last year's figures – just 173 fewer pupils in the independent sector. Numbers have increased for mainstream secondary and boarding pupils, and in special schools. Pupil numbers at mainstream nursery and primary schools have fallen, although this may be due to the continued decline of this age group in the population.

“The sector is in good heart”, said John Edward, Director of SCIS. “It’s clear that having chosen an independent school, parents will do all they can to keep their children there.”

Table 1 –All schools

	All pupils including nursery	Total excluding nursery	Nursery pupils	Primary pupils	Secondary pupils	Day pupils excluding nursery	Boarding pupils
2010/11	31,540	29,810	1,730	11,045	18,765	26,155	3,655
% change	-0.5	-0.1	-7.5	-2.3	+1.2	-0.6	+3.7
2009/10	31,713	29,842	1,871	11,306	18,536	26,318	3,524
% change	-0.4	-0.7	+5.2	-2.5	+0.4	-0.8	0.0
2008/09	31,840	30,061	1,779	11,601	18,460	26,538	3,523

Table 2 –Mainstream Schools only

	All pupils including nursery	Total excluding nursery	Nursery pupils	Primary pupils	Secondary pupils	Day pupils excluding nursery	Boarding pupils
2010/11	30,860	29,147	1,713	10,922	18,225	25,845	3,302
% change	-0.9	-0.4	-7.7	-2.5	+0.9	-0.9	+3.2
2009/10	31,130	29,275	1,855	11,207	18,068	26,076	3,199
% change	-0.4	-0.7	+5.3	-2.3	+0.3	-0.8	+0.3
2008/09	31,251	29,489	1,762	11,468	18,021	26,298	3,191

Table 3 - Special Schools only

	All pupils including nursery	Total excluding nursery	Nursery pupils	Primary pupils	Secondary pupils	Day pupils excluding nursery	Residential pupils
2010/11	680	663	17	123	540	310	353
% change	+16.6	+16.9	+6.3	+24.2	+15.4	+28.1	+8.6
2009/10	583	567	16	99	468	242	325
% change	-1.0%	-0.9%	-5.9%	-25.6%	+6.6%	+0.8%	-2.1%
2008/09	589	572	17	133	439	240	332

Chart showing primary¹ and secondary pupil numbers in SCIS schools 1999-2010

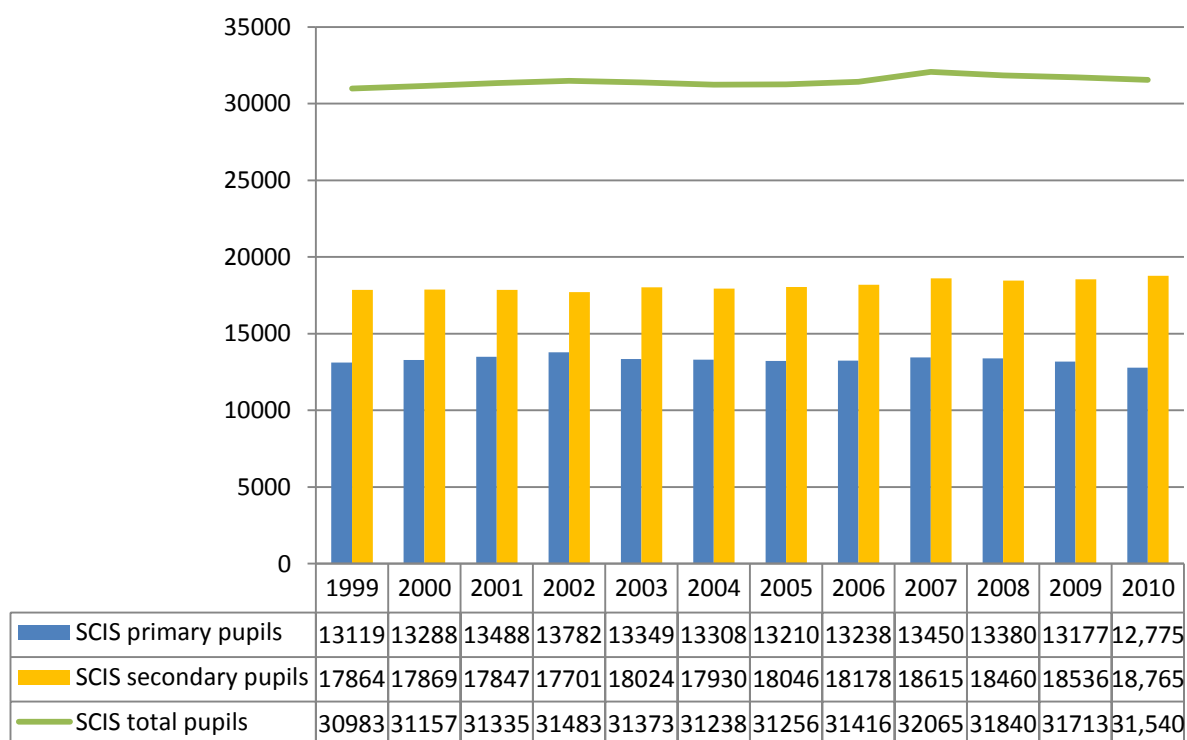
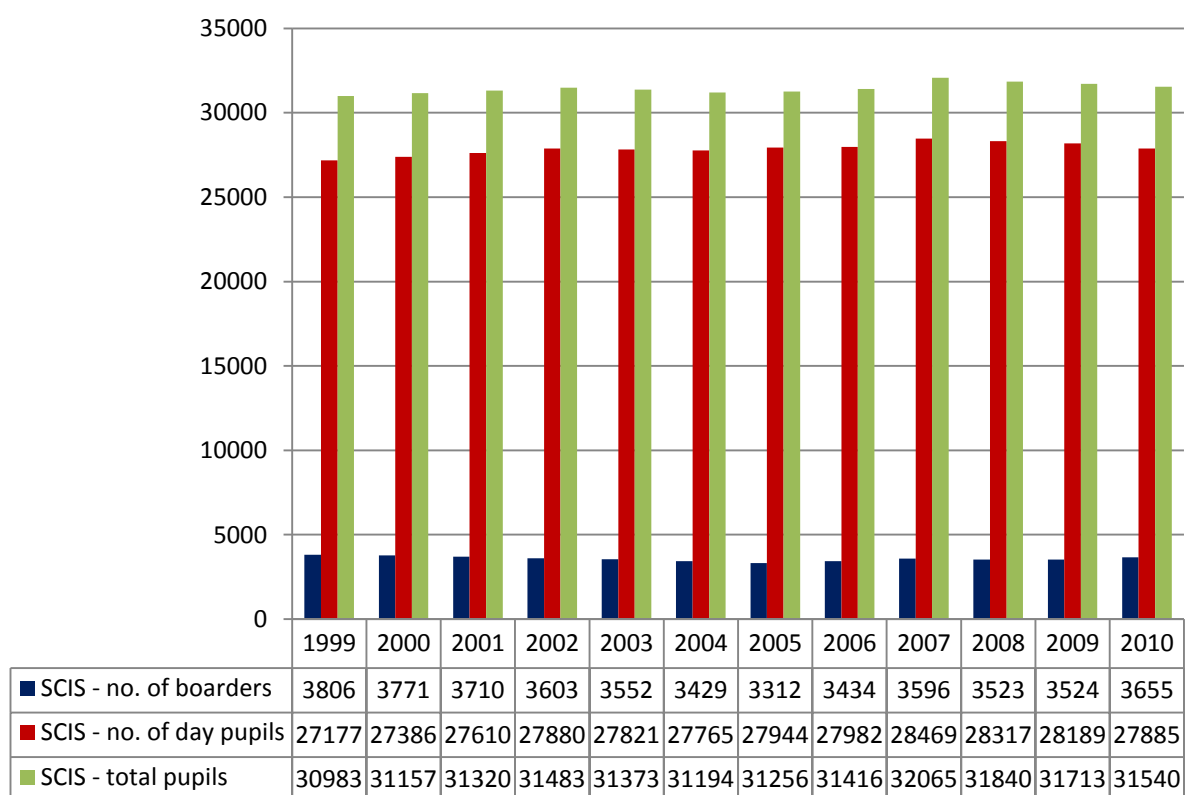


Chart showing day² and boarding pupil numbers in SCIS schools 1999-2010



¹ In this chart, primary pupil numbers include nursery pupils.

² In this chart, day pupil numbers include nursery pupils.

Ends

For further information please contact John Edward or Sarah Randell on 0131 220 2106.