

SCIS Pupil Numbers 2010/11

This paper illustrates pupil numbers in SCIS schools as at September 2011. Pupil numbers have remained stable overall, with a fractional fall of 0.4%, a smaller fall than last year. Numbers have increased for secondary pupils in mainstream schools, and nursery and primary pupils in special schools. There has been a slight reduction in pupil numbers at mainstream nursery and primary level, although this may be due in part to the decreasing numbers of primary aged children within the population. The number of boarding and residential pupils has fallen marginally.

Table 1 –All schools

	All pupils including nursery	Total excluding nursery	Nursery pupils	Primary pupils	Secondary pupils	Day pupils excluding nursery	Boarding pupils
2011/12	31,425	29,688	1,737	10,893	18,795	26,113	3,575
% change	-0.4	-0.4	+0.4	-1.4	+1.2	-0.2	-2.2
2010/11	31,540	29,810	1,730	11,045	18,765	26,155	3,655
% change	-0.5	-0.1	-7.5	-2.3	+1.2	-0.6	+3.7
2009/10	31,713	29,842	1,871	11,306	18,536	26,318	3,524

Table 2 –Mainstream Schools only

	All pupils including nursery	Total excluding nursery	Nursery pupils	Primary pupils	Secondary pupils	Day pupils excluding nursery	Boarding pupils
2011/12	30,775	29,087	1,688	10,760	18,327	25,787	3,300
% change	-0.3	-0.2	-1.5	-1.5	+0.16	-0.2	-0.1
2010/11	30,860	29,147	1,713	10,922	18,225	25,845	3,302
% change	-0.9	-0.4	-7.7	-2.5	+0.9	-0.9	+3.2
2009/10	31,130	29,275	1,855	11,207	18,068	26,076	3,199

Table 3 - Special Schools only

	All pupils including nursery	Total excluding nursery	Nursery pupils	Primary pupils	Secondary pupils	Day pupils excluding nursery	Residential pupils
2011/12	650	601	49	133	468	326	275
% change	-4.4	-9.4	+188.2	+8.1	-13.3	+5.2	-22.1
2010/11	680	663	17	123	540	310	353
% change	+16.6	+16.9	+6.3	+24.2	+15.4	+28.1	+8.6
2009/10	583	567	16	99	468	242	325

Chart showing primary¹ and secondary pupil numbers in SCIS schools 2000-2011

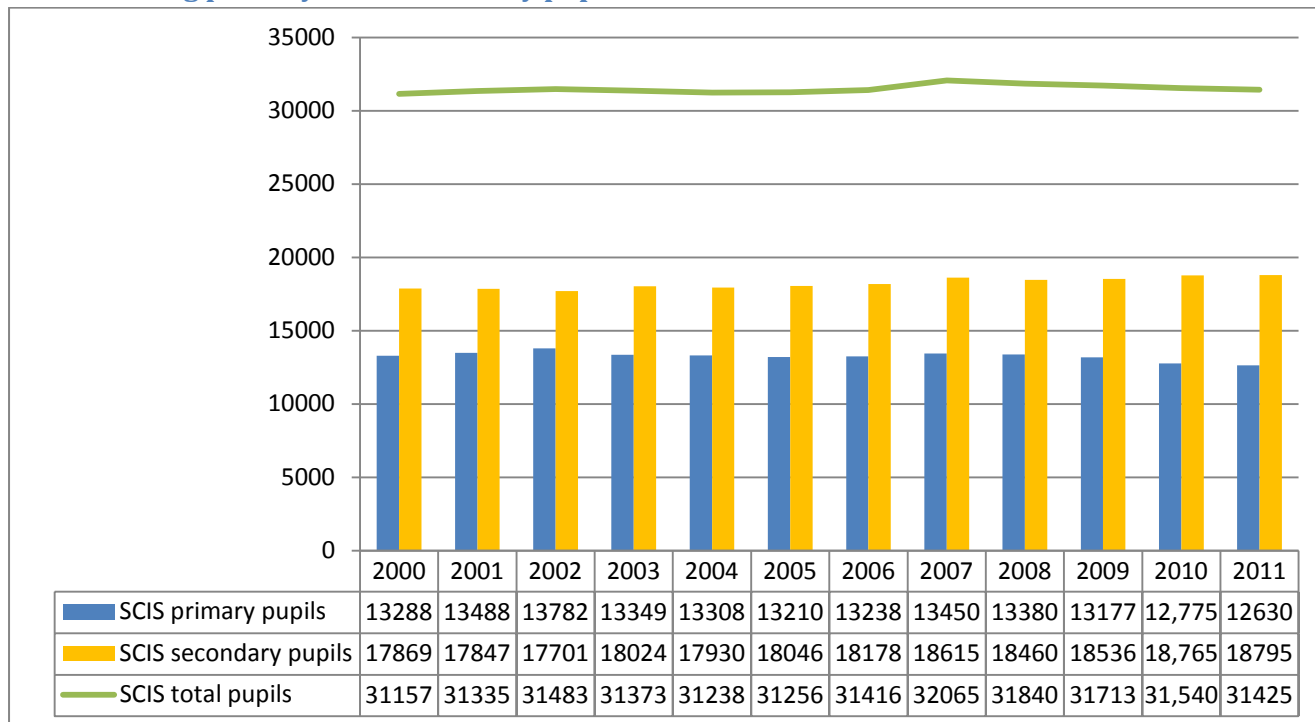
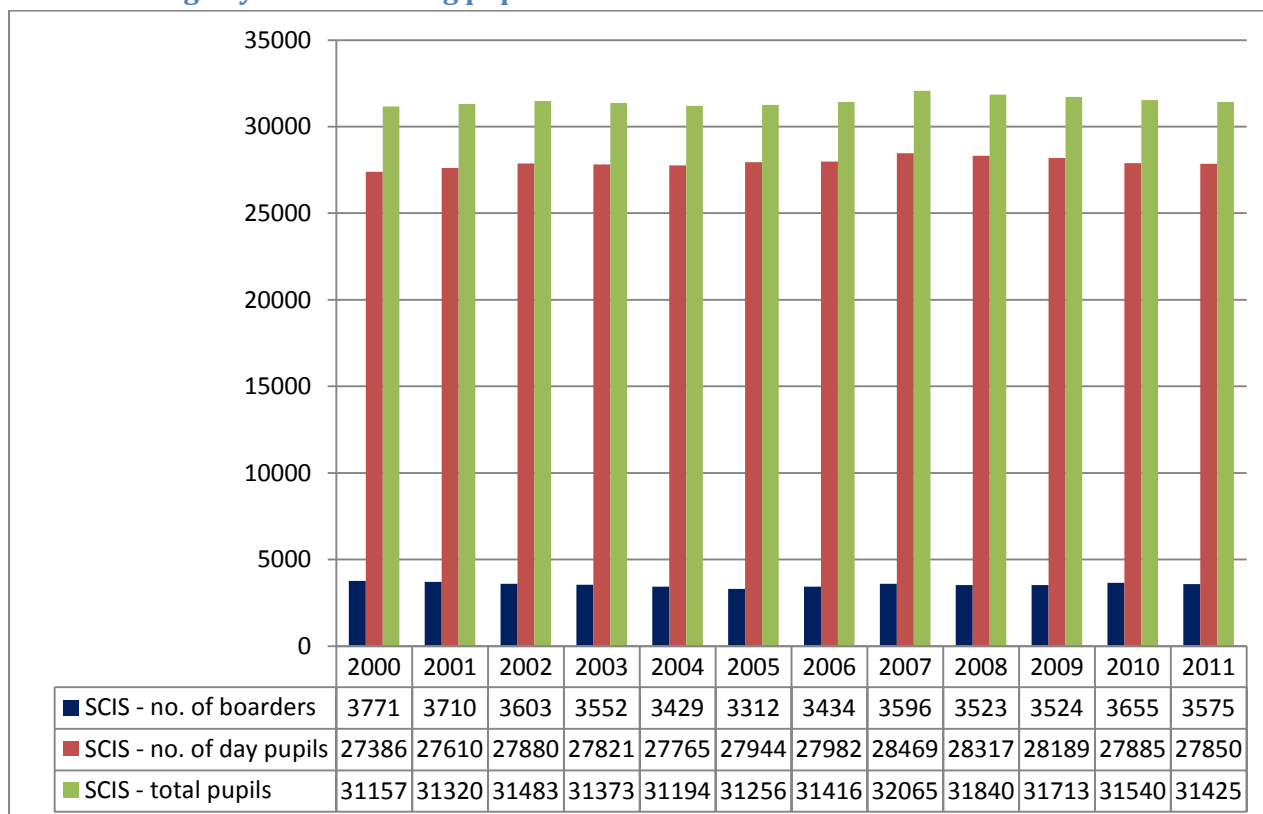


Chart showing day² and boarding pupil numbers in SCIS schools 2000-2011



¹ In this chart, primary pupil numbers include nursery pupils.

² In this chart, day pupil numbers include nursery pupils.