



## Scottish Council of Independent Schools

Press Statement : 25 September 2008

### INDEPENDENT SCHOOLS REMAIN STRONG

The independent sector in Scotland has had a good start to the session, with a healthy complement of pupils and stunning exam results, says the Scottish Council of Independent Schools<sup>1</sup>.

There are 31,840 children in Scotland's independent schools, the highest number in the past decade, apart from last year when the number was 32,065<sup>2</sup>.

*"We are much encouraged by the strength of the sector and by the commitment of parents. They value the education their children receive, seeing it as a priority, and are highly supportive", said Judith Sischy, Director of the Scottish Council of Independent Schools. "Our numbers have been and remain remarkably stable and this year's fluctuation of 225 children across the whole sector is negligible. Indeed, against the decline in the total pupil population in Scotland, this is a real achievement".*

The latest Scottish Government pupil projections confirmed the sector's stability over a long period, a trend forecast to continue: *"following trends in recent years, the number of pupils in independent schools has been projected to remain constant. Projections for publicly funded schools have then been reduced to account for the resulting slight decrease in the proportion of the population in publicly funded schools"*<sup>3</sup>.

SCIS data indicates that day school fees this year have risen on average by 5.4%, making the current average primary 1 and secondary 1 fees respectively £6,246 and £8,691 per year. "Schools are sensitive to the economic climate and are striving to keep fees as low as possible", said Judith Sischy. "All schools offer some form of financial assistance".

---

<sup>1</sup> See SCIS Press Release August 08, available at:

<http://www.scis.org.uk/assets/files/Press%20Release%20SCIS%20Schools%20Exam%20Results%2021%20Aug%202008.pdf>.

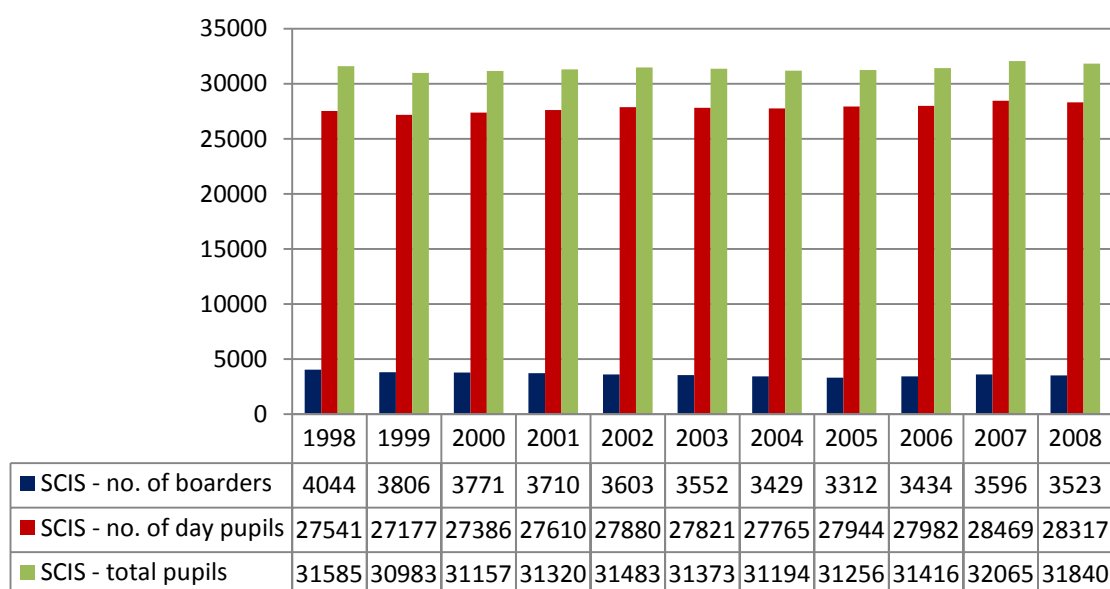
<sup>2</sup> Refer to charts 1 and 2.

<sup>3</sup> 'S1 & S2 Maths & English Class Sizes, Children Educated Outwith School, Pupil Projections and Provisional Pupil Numbers', 20th November 2007, (pp. 7).

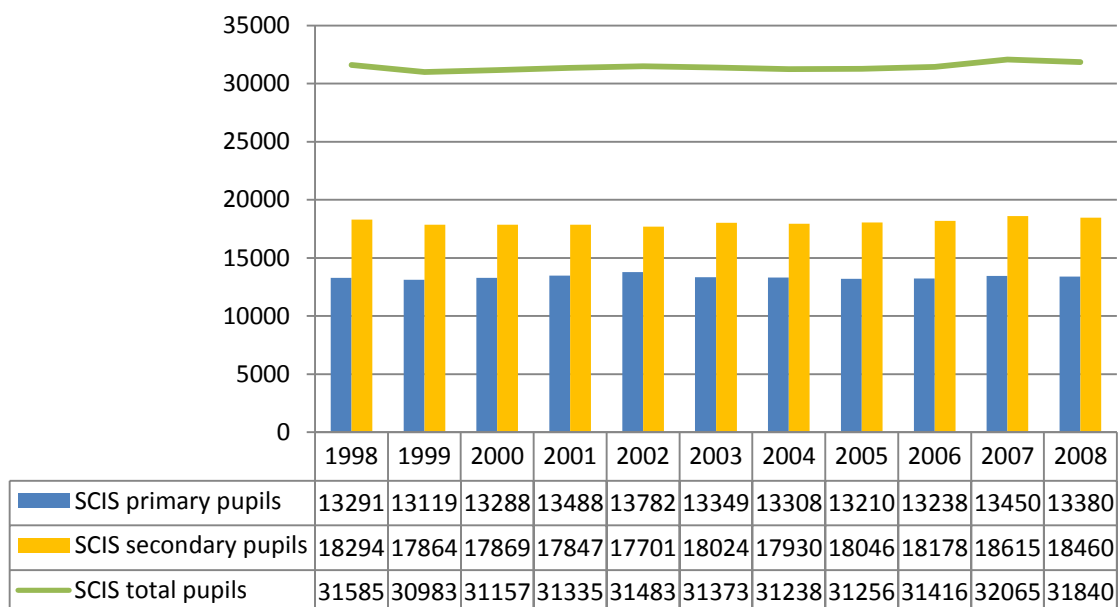
**Table 1**

	2008/09	% change	2007/08	% change	2006/07	% change	2005/06	% change
# of schools in directory	70		75		72		70	
Nursery	1,779	1.4	1,755	1.6	1,784	2.2	1,745	3.6
Primary	11,601	-0.8	11,695	2.1	11,454	-0.1	11,465	-1.4
Secondary	18,460	-0.8	18,615	2.4	18,178	0.7	18,046	0.7
<b>TOTAL</b>	<b>31,840</b>	<b>-0.7</b>	<b>32,065</b>	<b>2.1</b>	<b>31,416</b>	<b>0.5</b>	<b>31,256</b>	<b>0.1</b>
Boarding	3,523	-2.0	3,596	4.7	3,434	3.7	3,312	4.5
Day	28,317	-0.5	28,469	1.9	27,982	0	27,944	0.6
<b>TOTAL</b>	<b>31,840</b>	<b>-0.7</b>	<b>32,065</b>	<b>2.1</b>	<b>31,416</b>	<b>0.5</b>	<b>31,256</b>	<b>0.1</b>

**Chart 1 - SCIS pupil numbers in day and boarding schools 1998-2008**



**Chart 2 - SCIS pupil numbers in primary and secondary schools 1998-2008**



**Table 2 - Indicative Average Fees**

The table below shows the average termly and annual fee levels in SCIS schools in 2008. Average increases for session 2008-09 are 5.4% for day tuition and 5% for boarding.

<b>Day Schools</b>	<b>Termly fee</b>	<b>% change</b>	<b>Annual fee</b>
<b>Nursery fees</b>	£ 1,694	5.4	£ 5,082
<b>Primary fees<sup>4</sup></b>	£ 2,352	6.0	£ 7,056
<b>Secondary fees</b>	£ 2,934	4.8	£ 8,802

<b>Boarding Schools - Junior/prep</b>	<b>Termly fee</b>	<b>% change</b>	<b>Annual fee</b>
<b>Day fee</b>	£ 3,529	4.8	£ 10,587
<b>Boarding fee</b>	£ 5,641	6.0	£ 16,923

<b>Boarding Schools - senior</b>	<b>Termly fee</b>	<b>% change</b>	<b>Annual fee</b>
<b>Day fee</b>	£ 5,042	4.7	£ 15,126
<b>Boarding fee</b>	£ 7,766	4.0	£ 23,298

Please note that the figures quoted are averages and reflect a range of fees at independent schools throughout Scotland. The average fee levels quoted for 2008 are not directly comparable with previous years because a new method of fee calculation has been adopted in order to present a more accurate summary<sup>5</sup>.

Fees vary considerably between different types of school: day and boarding; junior and senior; urban and rural. Some schools make an additional charge for 'extras', such as lunches and books, while others charge an all-inclusive fee. Fee details for each member school are given on the SCIS website at [www.scis.org.uk](http://www.scis.org.uk).

Notes:

The choice of schools includes co-educational and single-sex schools, boarding and day, junior, senior and all-through schools, special and specialist schools.

**ENDS**

For further details see the SCIS website at [www.scis.org.uk](http://www.scis.org.uk)  
Scottish Council of Independent Schools  
21 Melville Street, Edinburgh EH3 7PE  
Telephone: 0131 220 2106

<sup>4</sup> The mean termly fee for P1 in 2008 is £2,082.

<sup>5</sup> Mean fee *levels* for 2008 have been calculated by taking into account P1 and P7 (for primary) and S1 and S6 (for secondary) fees. Fee *increases* have been calculated using the 2007 methodology which took only P1 and S6 fees into account. This is because attempts to compare 2008 reported averages with 2007 reported averages would give the impression of disproportionate increases. For fee increases, the 5% trimmed mean is reported to eliminate outliers.