

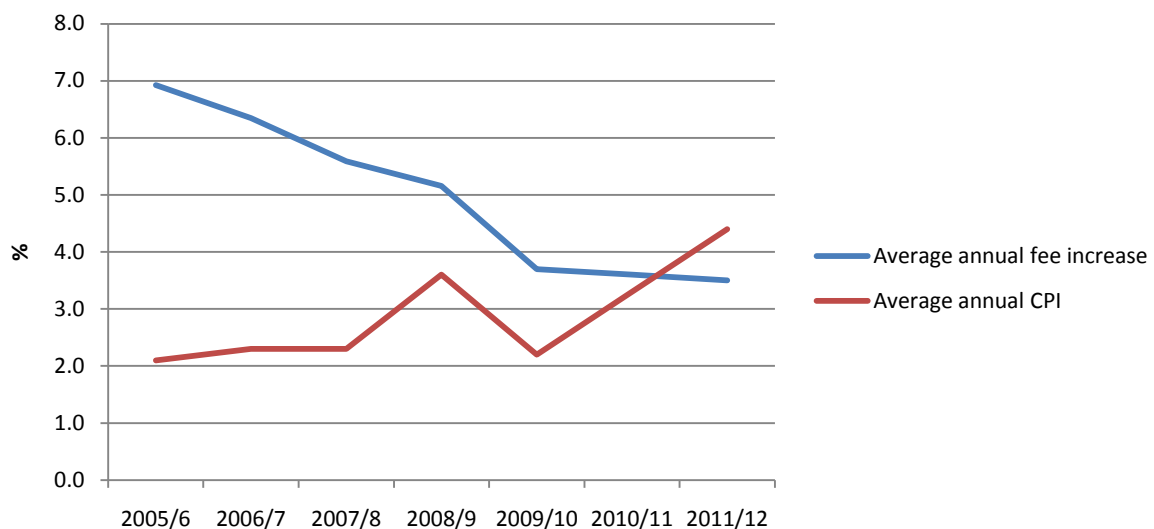
## Indicative Average Fees in SCIS schools 2011/12

The tables below show the average termly and annual fee levels in SCIS schools for session 2011/12. Average increases for the session are around 3% for fees in day schools and 4% in boarding schools. In the past two years, fee increases have been at or below inflation.

Day Schools	Termly fee	% change	Annual fee
Nursery fees	£2,009	+2.9	£6,027
Primary fees	£2,676	+3.0	£8,028
Secondary fees	£3,318	+2.9	£9,954

Boarding Schools	Termly fee	% change	Annual fee
Junior day fee	£3,759	+3.6	£11,277
Junior boarding fee	£6,231	+3.7	£18,693
Senior day fee	£5,777	+4.1	£17,331
Senior boarding fee	£8,693	+4.5	£26,079

### Average fee increases in SCIS schools and CPI inflation, 2005-2011



Source: SCIS fee returns and Office for National Statistics <http://www.statistics.gov.uk/statbase/TSDdownload2.asp>

The figures quoted are averages and reflect a range of fees at independent schools throughout Scotland<sup>1</sup>. Fees vary considerably between different types of school: day and boarding; junior and senior. Some schools make an additional charge for 'extras', such as lunches and books, while others charge an all-inclusive fee. Further details of the fee level in each school and what is included in the fees can be found on the SCIS website at [www.scis.org.uk](http://www.scis.org.uk).

<sup>1</sup> Average fee levels are calculated as the grand mean of the mean of the lowest and highest fee at primary and the mean of the lowest and highest fee at secondary level for each school. For fee increases, median values are reported.