

SCIS Mid-Year Report 2009/10

Key Facts¹

- SCIS represents **98%** of independently educated pupils in Scotland.
- In 2009 nearly **32,000** children are educated in SCIS schools. Just over **4%** of pupils in Scotland are educated independently.
- There are SCIS schools in 22 of the 32 Local Authorities. However, in some Local Authorities, SCIS schools account for a large proportion of pupils: for example, 24% of all secondary pupils in Edinburgh and 16% in Perth and Kinross are educated independently.
- In terms of the number of pupils, the independent sector is equivalent in size to the **7th largest Local Authority** (it is the 12th largest in terms of primary pupils and the 6th largest in terms of secondary school pupils).
- In terms of the number of teachers employed, the independent sector is equivalent to the 4th largest Local Authority in Scotland. The pupil-teacher ratio in SCIS schools is 9:1.
- In 2009/10, average fee increases were 3.8% for day tuition and 3.4% for boarding. Average secondary day fees were £9,198 p.a.; average secondary boarding fees were £23,076 p.a..
- The total amount awarded in financial assistance for session 2009/10 was just over £24 million, a significant increase on the previous year. Over 20% of SCIS pupils received some kind of help with fees.
- Around 58% of S5 pupils who sat Higher exams achieved five or more Highers at grade A-C. Over half the Higher entries from S5 candidates in independent schools achieved a grade A.
- Of the 3,172 independent school leavers who left school in summer 2009, 90% entered full time further or higher education.
- According to SCIS' parental survey, the two most important reasons for choosing an independent school are our schools' consideration for the development of the whole child and the purposeful learning environment which independent schools foster.

¹ Sources: SCIS census as at September 2009, Scottish Government publications 'Pupils in Scotland 2009', November 2009; 'Teachers in Scotland 2009', November 2009 and 'Independent School Census 2009', April 2010.

Table of Contents

SCIS Mid-Year Report 2009/10	1
Key Facts	1
SCIS Pupil Numbers 2009/10	3
SCIS Pupils by Local Authority area	4
SCIS pupils by stage and mode of attendance	5
International pupils in SCIS schools	6
SCIS Fees	7
Teachers and Support Staff	7
Financial Assistance	8
Leaver Destinations	9

SCIS Pupil Numbers 2009/10

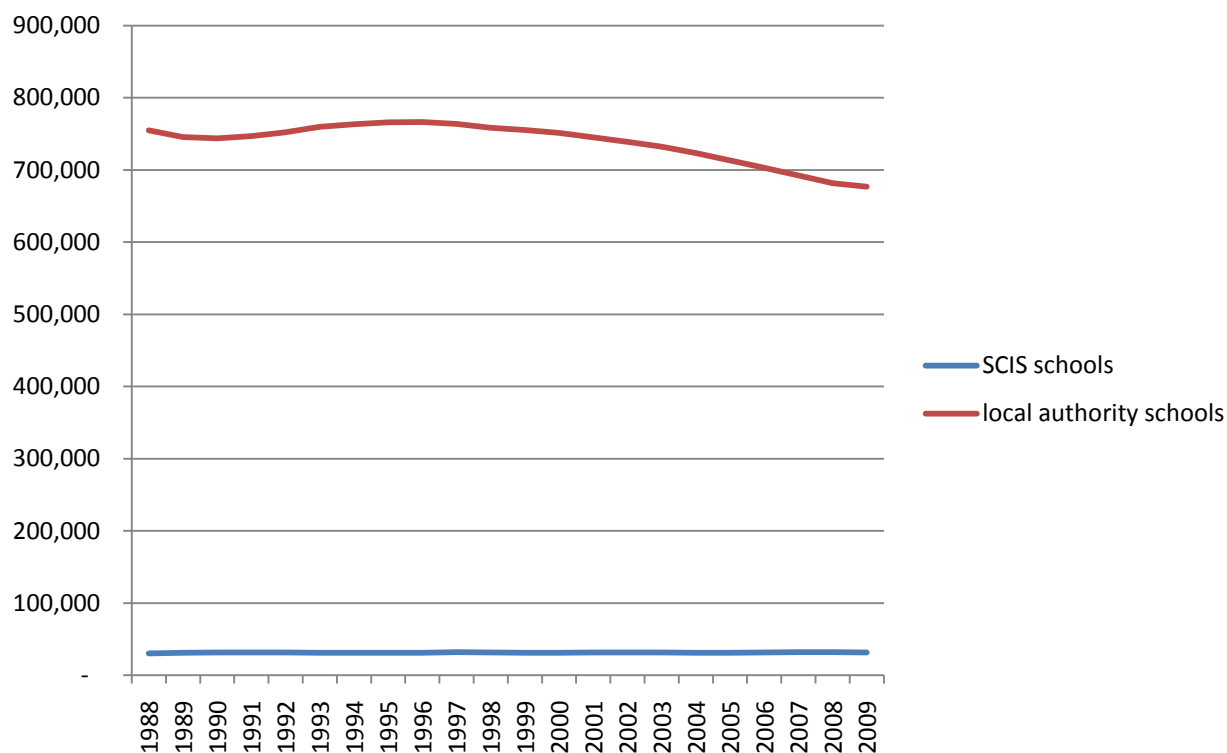
In 2009, the number of pupils in Local Authority schools fell by 0.7% on the previous year², compared with just 0.4% - or 127 pupils - in SCIS schools. The proportion of pupils educated in SCIS schools remains unchanged at 4.3%, in spite of a decrease in the overall school-aged population. There was an increase in the number of SCIS nursery and secondary pupils, and there has been no change in the number of boarding pupils since September 2008. Further in-depth analysis of pupil numbers over the past 10 years can be found on the SCIS website: <http://www.scis.org.uk/facts-and-statistics/pupil-numbers>

Table 1: SCIS pupil numbers

	All pupils including nursery	Total excluding nursery	Nursery pupils	Primary pupils	Secondary pupils	Day pupils excluding nursery	Boarding pupils
2009/10	31,713	29,842	1,871	11,306	18,536	26,318	3,524
% change	-0.4	-0.7	+5.2	-2.5	+0.4	-0.8	0.0
2008/09	31,840	30,061	1,779	11,601	18,460	26,538	3,523
% change	-0.7	-0.8	+1.4	-0.8	-0.8	-0.7	-2.0
2007/08	32,065	30,310	1,755	11,695	18,615	26,714	3,596

Source: SCIS census returns.

Chart 1: SCIS pupil numbers and pupils in publicly funded schools – 1988-2008



² Source: Scottish Government publication 'Pupils in Scotland 2009'

SCIS Pupils by Local Authority area

In September 2009, the total pupil population in Scotland was 708,453. The distribution of independent schools across the country is uneven: there are SCIS schools in 22 of the 32 Local Authorities. However, in some Local Authorities, pupils in SCIS schools account for a large proportion of pupils. Pupils attending SCIS schools may not all be resident in the Local Authority where the school is situated.

Table 2: SCIS pupil numbers by Local Authority area

Local Authority area where school is located	2009 All SCIS pupils by Local Authority area	All pupils in SCIS schools as % of all pupils in Scotland by Local Authority area	Pupils in mainstream SCIS secondary schools by Local Authority area	Pupils in mainstream SCIS secondary schools as a % of all mainstream secondary pupils in Scotland by Local Authority area
City of Aberdeen	3,500	14.0	1,777	15.9
Angus	227	1.4	70	1.0
Argyll and Bute	543	4.5	349	6.0
Clackmannanshire	1,236	15.5	848	22.6
Dundee City	1,019	5.5	685	8.1
East Ayrshire	87	0.5	-	-
East Lothian	794	5.7	386	6.2
East Renfrewshire	300	1.8	174	2.1
City of Edinburgh	10,831	19.7	6,115	24.2
Fife	617	1.3	345	1.6
City of Glasgow	6,273	8.8	3,611	11.8
Highland	20	0.1	4	0.0
Inverclyde	827	7.2	407	7.6
Moray	611	4.7	520	8.2
North Lanarkshire	21	0.0	-	-
Perth and Kinross	2,265	11.4	1,471	16.1
Renfrewshire	112	0.5	-	-
Scottish Borders	189	1.2	25	0.4
South Ayrshire	555	3.7	286	4.0
South Lanarkshire	936	2.1	536	2.7
Stirling	667	5.1	459	7.1
West Lothian	83	0.3	-	-
Total	31,713	n/a	18,068	n/a

Chart 2: showing the percentage of all mainstream primary and secondary pupils who are educated independently in each Local Authority area.

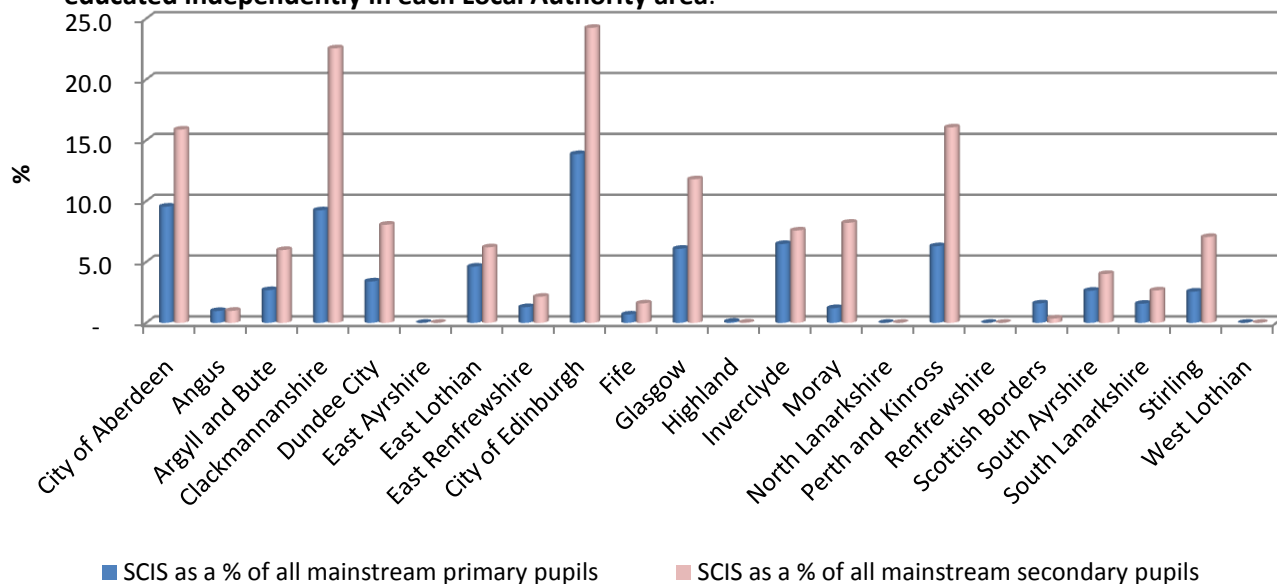
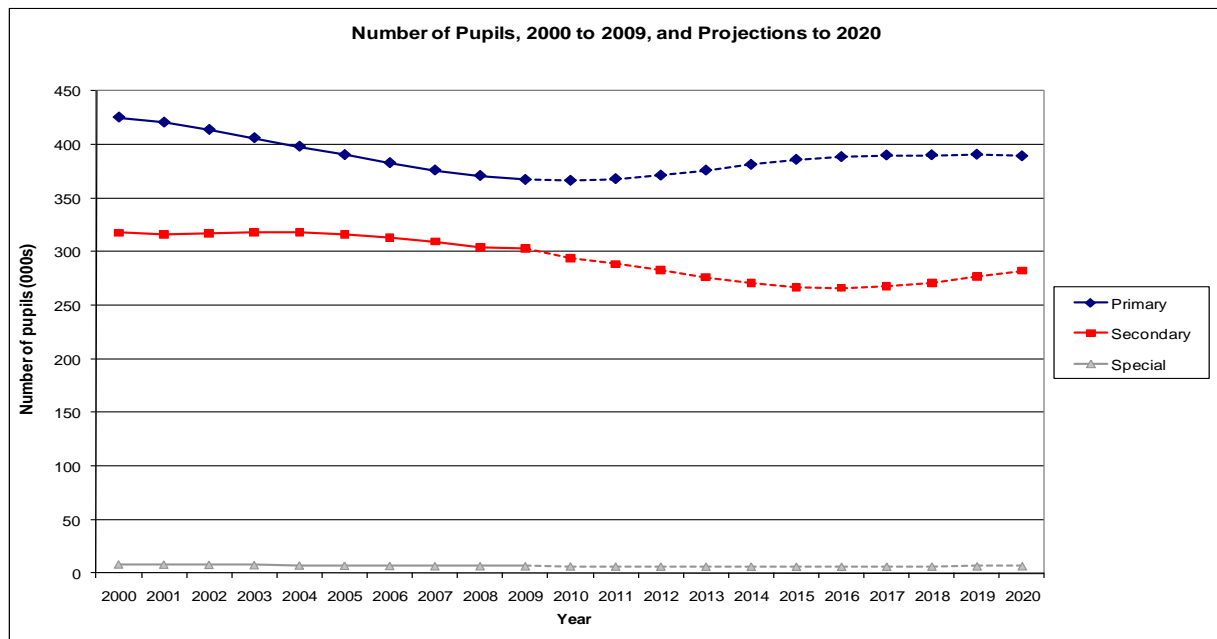


Chart 3: showing the most recent projections for school-aged pupils - Scottish Government, 2008-based



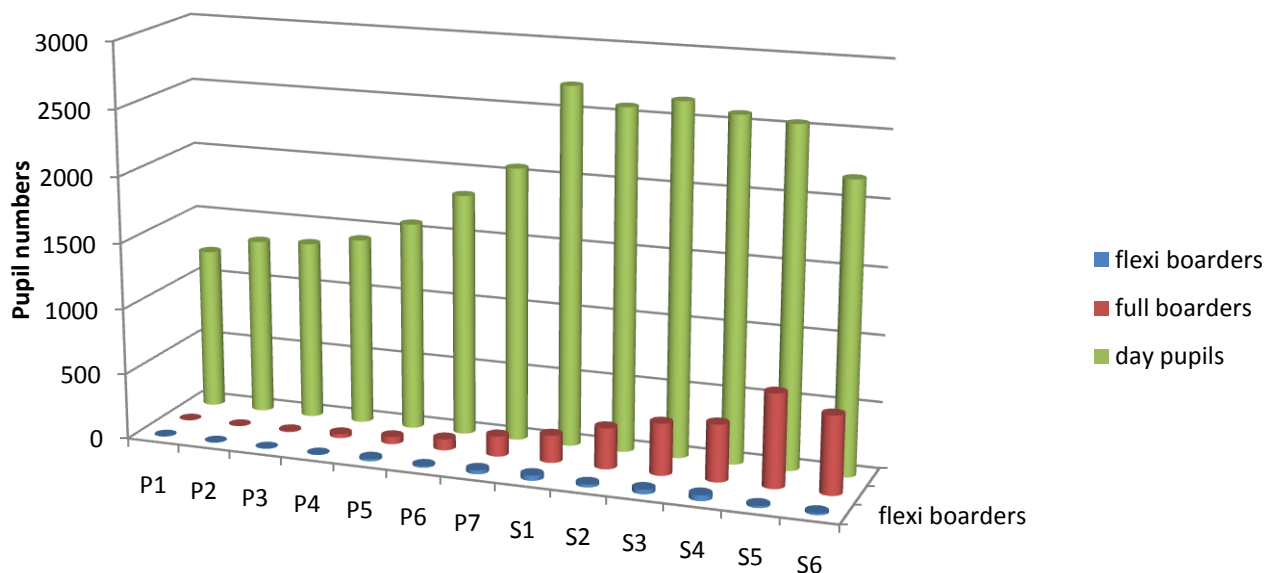
In 2009 there were 676,740 pupils in publicly funded schools. The number has fallen from 681,573 in 2008. The latest projections suggest that pupil numbers in publicly funded schools will decrease steadily to 662 thousand in 2015, then rise until peaking at 684 thousand in 2022.

SCIS pupils by stage and mode of attendance

Although the majority of independent school pupils attend as day pupils, a significant proportion of pupils - 11% - also board. Although flexible boarding provision is offered by a number of SCIS schools, the data supplied to SCIS suggest that full boarding is still the preferred boarding option: 7% of mainstream boarders attend as flexi-boarders, while 93% attend as full boarders.

Chart 4 illustrates that, in contrast to the Local Authority sector, SCIS pupil numbers are greater at secondary level than in the primary years.

Chart 4: day, boarding and flexi-boarding pupil numbers by stage



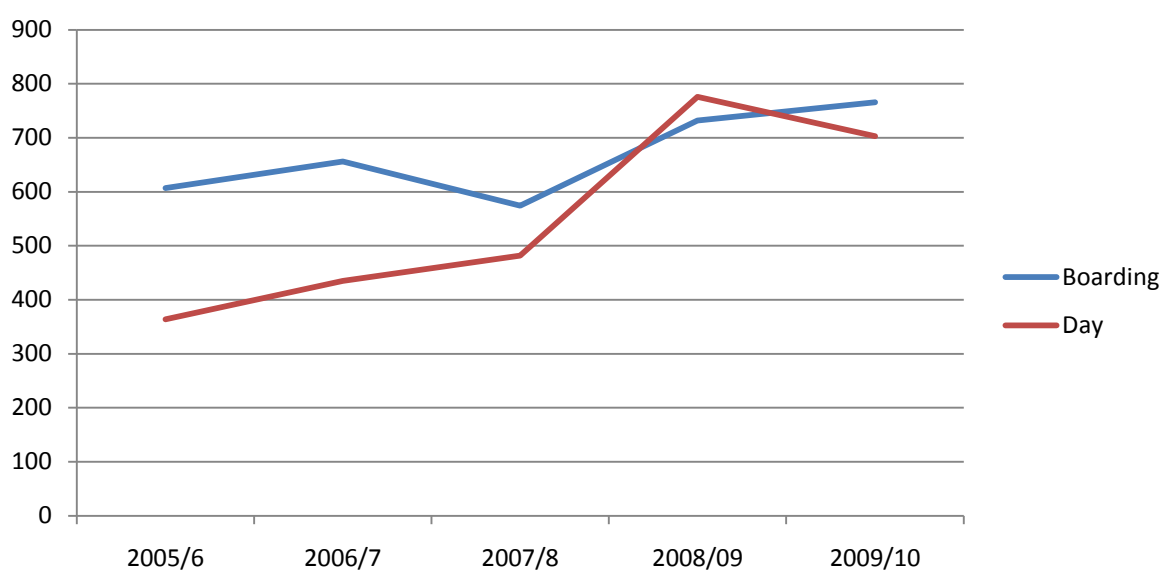
International pupils in SCIS schools

In September 2009 there was a total of 1,469 international pupils in SCIS schools. Of these, just over half were boarders. Table 3 and Chart 5 show trends in international pupil numbers over the past five years. The number of international boarding pupils has been increasing gradually. The number of day pupils who are non-British passport holders has also increased over the past few years, although accurate data recording is more challenging for this group.

Table 3: International pupils in SCIS schools 2005-09

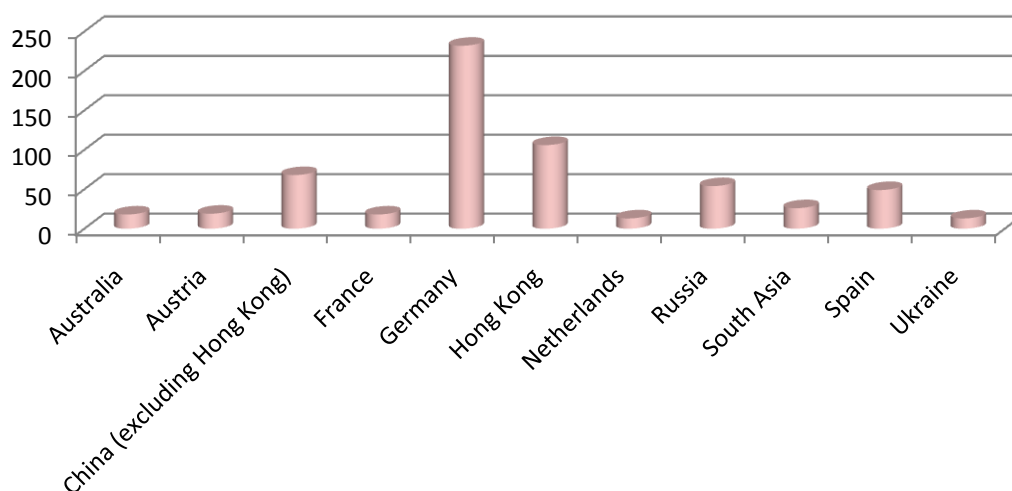
	2009/10	%	2008/09	%	2007/8	%	2006/7	%	2005/6	%
Boarding	766	52.1	732	48.4	574	54.3	656	60.1	607	62.5
Day	703	47.9	776	51.6	482	45.6	435	39.8	364	37.4
Total	1,469		1,508		1,056		1,091		971	

Chart 5: Number of international pupils in SCIS schools by mode of attendance 2005-09



There are 766 international boarding pupils in SCIS schools. 80% are from the 11 countries shown in Chart 6 while the remaining 20% are from 42 countries worldwide. The countries sending the most international pupils to SCIS schools are Germany, Hong Kong and China. Over half of all international pupils come from these three countries.

Chart 6: Top ten countries from which international boarding pupils attend SCIS schools



SCIS Fees

The tables below show the average termly and annual fee levels in SCIS schools for the school year 2009/10. Average increases for the session are around 3.8% for fees in day schools³ and 3.4% in boarding schools.

Table 4a: fees in SCIS day schools

Day Schools	Termly fee	% change	Annual fee
Nursery fees	£1,864	+4.0	£5,592
Primary fees	£2,447	+3.9	£7,341
Secondary fees	£3,066	+3.8	£9,198

Table 4b: fees in SCIS boarding schools

Boarding Schools	Termly fee	% change	Annual fee
Junior day fee	£3,409	+2.8	£10,227
Junior boarding fee	£5,726	+3.8	£17,178
Senior day fee	£4,976	+3.8	£14,928
Senior boarding fee	£7,692	+3.1	£23,076

Please note that the figures quoted are averages and reflect a range of fees at independent schools throughout Scotland⁴. Fees vary considerably between different types of school: day and boarding; junior and senior. Some schools make an additional charge for 'extras', such as lunches and books, while others charge an all-inclusive fee.

Teachers and Support Staff

In September 2009, the total number of **Full Time Equivalent (FTE)** teachers in SCIS schools was 3,517⁵. Teachers in independent schools account for around 6% of the teaching workforce in Scotland, and as an employer of teachers, the independent sector is equivalent in size to the fourth largest Local Authority⁶. The pupil-teacher ratio in independent schools is about 9:1⁷.

Table 5: Teaching staff

Teaching Staff	Full Time		Part Time		Total	
	Male	Female	Male	Female	Headcount	FTE
Mainstream schools	1,105	1,802	177	606	3,690	3,299
Special schools	72	121	17	34	244	218.5
Total	1,177	1,923	194	640	3,934	3,517

Source: SCIS census returns

The gender balance of teachers in independent schools compares well with the Local Authority sector: 19% of primary teachers in independent schools are male, compared with only 8% in Local

³ Primary and secondary fees only, not including nursery fees.

⁴ Mean fee levels for 2009 are calculated as the mean of the lowest and highest fee at primary and secondary level for each school (e.g., the senior fee is the mean of the S1 and S6 fee). For fee increases, the median increase is reported.

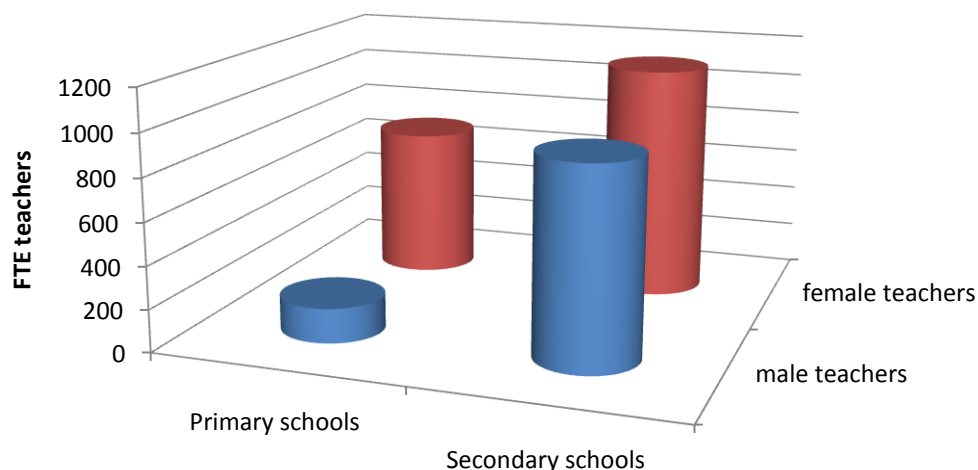
⁵ Source: SCIS census. For the purposes of estimating FTE, part time staff are counted as 0.5.

⁶ Source: SCIS analysis of Scottish Government statistical bulletins 'Teachers in Scotland 2009' and the 'Independent Schools Census 2009'.

⁷ Source: Scottish Government's 'Independent School Census 2009'.

Authority primary schools. In independent secondary schools, 46% of teachers are male, compared with 39% in Local Authority secondary schools.

Chart 7: Male and Female teachers in Mainstream SCIS Primary and Secondary Schools (FTE)



Independent schools also employ a large number of non-teaching staff such as classroom assistants, boarding and care staff, and specialist support staff whose roles range from financial manager to educational psychologist. Taken together, independent schools employ nearly 7,000 people in Scotland.

Table 6: Non-teaching staff including residential care and other support staff

Non-Teaching Staff	Full Time		Part Time		Total	
	Male	Female	Male	Female	Headcount	FTE
Mainstream schools	591	948	213	949	2,889	2,120.0
Special schools	417	722	37	184	1,360	1,249.5
Total	1,008	1,670	250	1,133	4,249	3,370.0

Source: SCIS census returns

Financial Assistance

Information on financial assistance was provided by SCIS schools as part of the 2009 SCIS census. We are still developing our databases of financial assistance information and it is therefore difficult to make meaningful comparisons with figures from previous years. Our data do, however, suggest that the amount awarded in financial assistance has increased significantly since last year.

- **Independent schools awarded over £24 million in bursaries and fee reductions for session 2009/10.**
- **Over one half of all the funds disbursed is means tested.**
- **Over 20% of SCIS pupils receive help with fees.**

Leaver Destinations

In September 2008 there were 3,172 final year leavers in independent schools⁸.

- 95% of **independent school leavers** entered positive destinations⁹.
- 90% of **independent school leavers** entered full time further or higher education.
- 3% of **independent school leavers** were in employment.
- 2% of **independent school leavers** were doing voluntary work or were on gap years.
- Pupils from independent schools are over twice as likely to go on to university as pupils from Local Authority schools.

Chart 8: School leavers from independent and local authority secondary schools in Scotland by destination category, 2008/09.

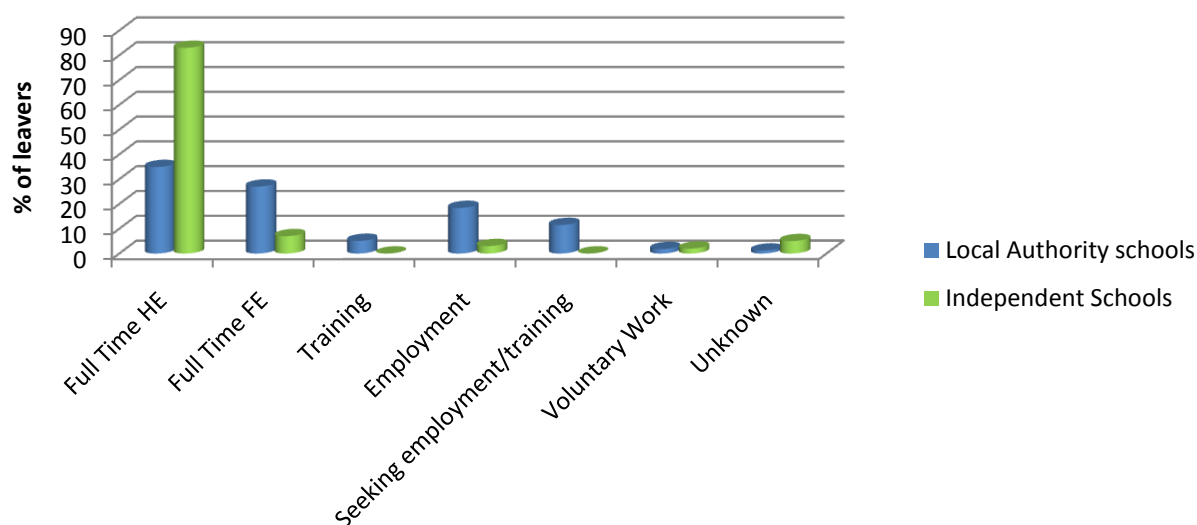
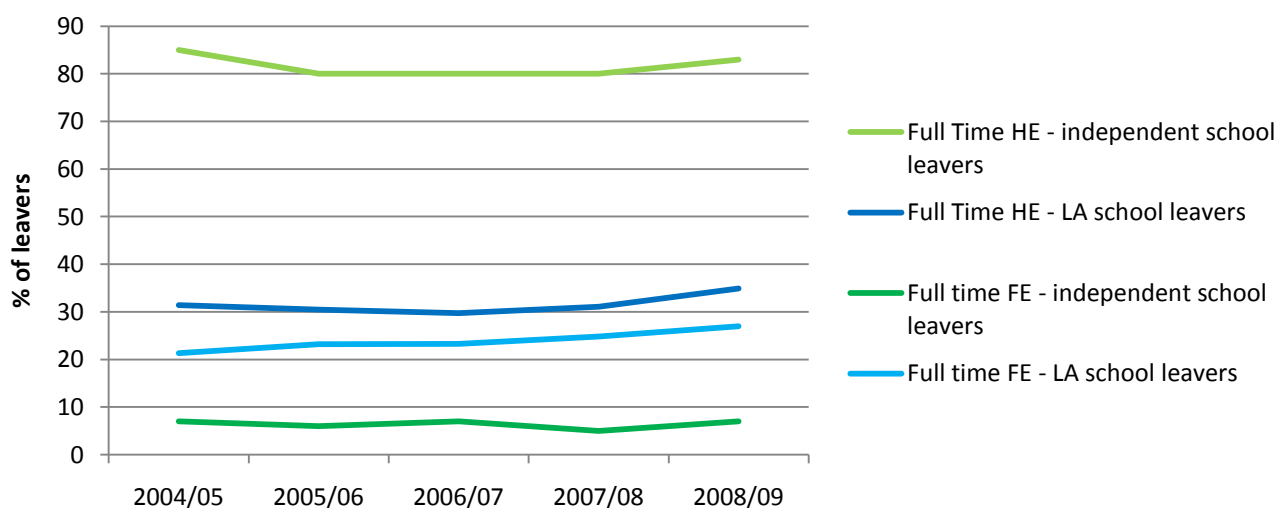


Chart 9: Percentage of school leavers from independent and Local Authority schools in Scotland entering full time higher and further education, 2005-2009



⁸ Source: 'Destinations of Leavers from Scottish schools: 2008/09' Scottish Government 24 November 2009.

⁹ 'Positive destinations' are defined by the Scottish Government as being full-time higher or further education, employment, voluntary work or training (Ibid. pp. 2). Information from independent schools is collected directly from the schools by the Scottish Government. Each year, the number of unknown destinations is relatively high (5% this year) because schools may not have had information on whether some leavers had been offered a place at university at the time returns were sent in. The proportion of independent school leavers entering positive destinations is therefore likely to be higher.

Chart 9 illustrates that independent school pupils are over twice as likely to go on to university as pupils from Local Authority schools. Leavers from Local Authority schools are more likely to go to college than pupils who attended independent schools (more than three times as likely). Whereas the leaver destinations of pupils from independent schools have remained stable for the past five years, more leavers from Local Authority schools are entering full time higher or further education than was the case in 2005. Based on available trend information, this pattern appears set to continue next year.